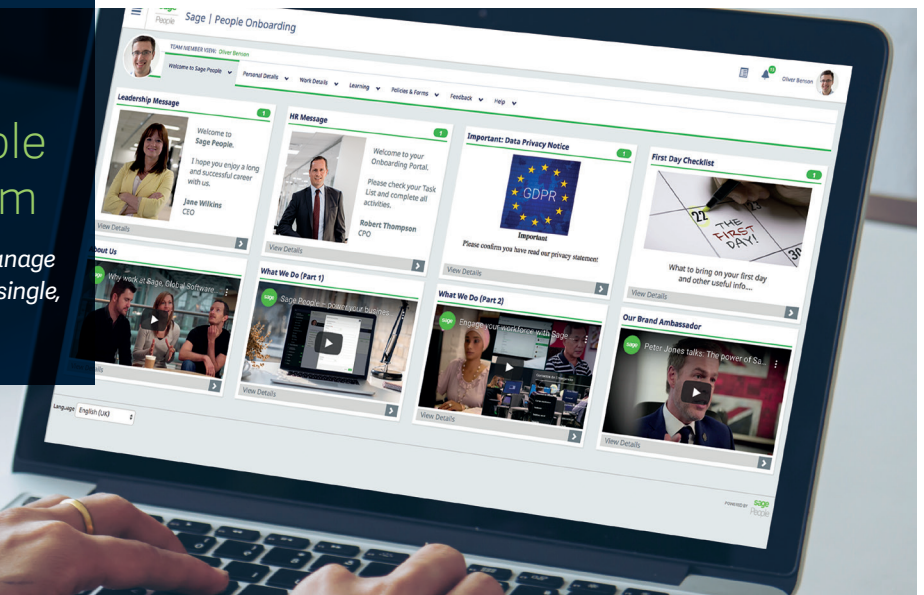


DATASHEET

The #1 HR and People management system

Built on Salesforce, Sage People helps manage your global employee information from a single, secure, cloud-based system.



Sage People is an HR and People system that helps companies transform the way they manage and engage their workforce. Built on Salesforce, the world's #1 cloud platform, it benefits from its powerful and secure capabilities.

**Why Sage People?**

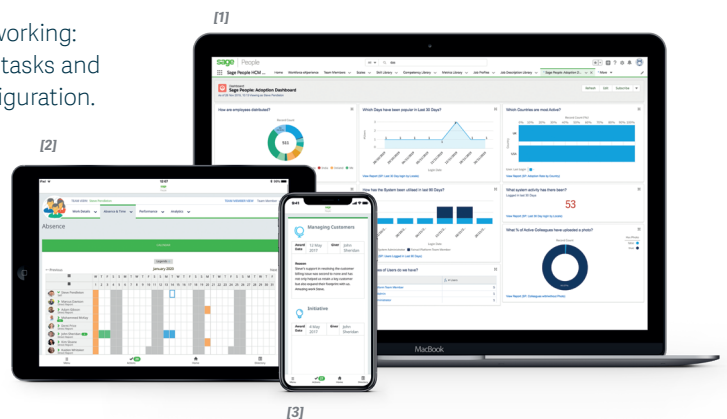
Set your organization up for success by adding Sage People to your technology stack. Sage People is an HR and People management solution that empowers your organization across the end-to-end employment journey to attract, engage, develop and retain the best talent. With Sage People you can:

- Improve workforce visibility**  
Get instant visibility into your workforce with a single source of truth. Sage People leverages Salesforce reports and dashboards to provide actionable insights that enable you to make smarter workforce decisions.
- Deliver great workforce experiences**  
Armed with stronger insights about your employees, you can work back from that to create great workforce experiences. Great experiences drive engagement, which increases overall employee performance.
- Increase workforce productivity**  
Design smarter and more agile ways of working: with Sage People you can automate key tasks and create new workflows through user configuration.
- Maintain global and local compliance**  
Create and enforce global policies while enabling managers to remain compliant with local regulations.
- Help your organization become a People Company**  
The changing world of work requires new ways of working, new HR and employee focused processes are replacing traditional HCM practices. With Sage People you can support and nurture your people, your most valuable asset.

<sup>[1]</sup> **Dashboards:** visualize KPIs and strategic data in one place.

<sup>[2]</sup> **Team calendar view:** see absences across your team.

<sup>[3]</sup> **Recognition:** celebrate individual employee performance.



# The benefits of Sage People and Salesforce

## Security

Sage People customer data is stored and processed by the Salesforce platform. Salesforce provides a comprehensive and flexible data security model to secure data at all levels including; infrastructure security, network security and application security. Salesforce is a world leader in enterprise cloud-computing, where trust is built right into the platform. Profiles and permission sets are used to control user access so you can ensure your employee data is safe and secure. Sage People supports a single sign-on, saving time without compromising security. More details on Salesforce's system security is available at [trust.salesforce.com](https://trust.salesforce.com).

## Compliance

Sage People helps automate global HR processes and policies, while allowing regional teams to comply with local regulations, which are all auditable. Sage People abides by the 'privacy by design' notion when developing the system and operating our services. Mitigate risk and remain compliant with current and future standards, such as the GDPR and CCPA. Both Sage People and Salesforce are ISO27001:2013 compliant, a well recognized international security standard. In addition, Salesforce is certified as compliant with some of the most rigorous, industry-accepted security, privacy, and reliability standards, a full list is available at [compliance.salesforce.com](https://compliance.salesforce.com).

## Ease of deployment

A Software as a Service HR solution means no need for lengthy installations, manual updates, or IT support. We provide pre-configured processes which have been tested by hundreds of customers and leverage Salesforce workflows so you can realize value from our system right away. Get up and running with Sage People in as little as 90 days. Customers can experience 80-100% adoption within two weeks and an ROI within six months or less.

## Innovation

Since Salesforce development teams take care of platform innovation, Sage People can focus and continuously explore opportunities to update our HR and People capabilities. The Sage People system is developed using an agile and incremental approach

to ensure we meet the needs of our customers both technically and functionally. We encourage customer involvement and feedback throughout the entire development process. Updates are delivered automatically so you are always on the latest version.

## Integrations

The Sage People API helps expand what Sage People as a system can do. We always look for ways to add more value by expanding our integration strategy with companion Sage products and complementary partner solutions. As well as our API we provide Sage People Payflow™ which is a multi-purpose solution for managing data flows between Sage People and other systems.

## Usability

Thanks to Salesforce, Sage People is 'always on' with 99.9%+ uptime. With all of your people information in one cloud-based system it means your employees can access workforce information at any time, from their mobile, tablet or desktop. The system supports 20 languages out of the box with the ability to support more. Sage People is available in Salesforce Lightning Experience for a contemporary user experience, look and feel.

## Accessibility

Salesforce is committed to providing on-demand enterprise applications accessible to all individuals, including users working with assistive devices, such as speech recognition software and screen readers. To help meet the goal of accessible universal design, Lightning Experience follows the internationally recognized best practices in Section 508 of the Rehabilitation Act and the Web Content Accessibility Guidelines (WCAG).

## Scalability

Operational processes and requirements grow as your company grows. Sage People is highly configurable to allow you to support thousands of employees and coordinate your workforce's activities to align with your business objectives. The system is responsive and can be tailored through configuration by your HR team. Start with what's critical to your business now and add further, more sophisticated, capabilities as you scale.



**Sage People is a Salesforce  
AppExchange Partner**

## About Sage People

Sage People enables mid-size, multi-locational companies to manage workforces through its global, cloud HR and People system, transforming how organizations acquire, engage, manage and develop their employees. Implemented quickly and simple to use, the award-winning system increases workforce visibility, HR productivity, and provides better experiences across the entire workforce.

For more information visit [www.sagepeople.com](https://www.sagepeople.com)  
where you can book a demo or take a product tour today.

**sage** | People

©2020 The Sage Group plc or its licensors. Sage, Sage logos, Sage product and service names mentioned herein are the trademarks of The Sage Group plc or its licensors. All other trademarks are the property of their respective owners.