



## ENTERPRISE ASSET MANAGEMENT WITH MAINTENANCE CONNECTION

### Harness the Power of a Scalable, SaaS Based EAM Software

Accruent's enterprise asset management software, Maintenance Connection, provides organizations with the ability to plan, execute and report on the maintenance efforts throughout the entirety of an asset's lifecycle, from initial procurement to final decommissioning.

#### KEY BENEFITS:

- Improve operations
- Enhance reliability of key assets
- Leverage complete asset information and history
- Minimize costly unplanned outages
- Define and measure maintenance processes



Empowering 350,000  
maintenance managers  
worldwide



Used by 30% of the top  
technology companies  
in the world



Manages \$1.5 trillion  
in assets



10,000+ Accruent customers  
in 150+ countries



# ENTERPRISE ASSET MANAGEMENT SOFTWARE PURPOSE-BUILT FOR THE DIGITAL WORLD

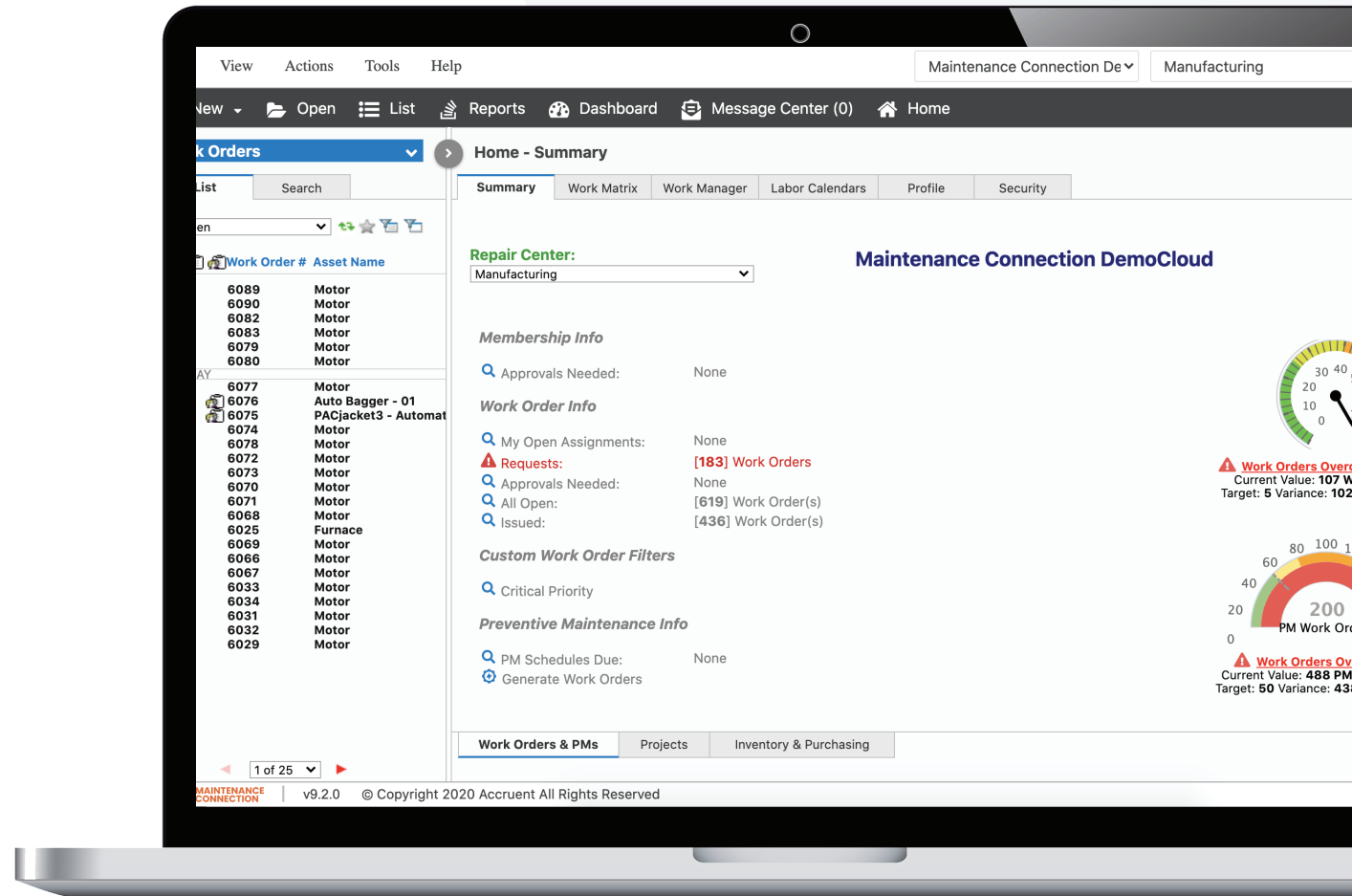
Accruent's Maintenance Connection combines the foundations of a traditional CMMS software with the enterprise-ready scalability of an EAM software to help digitize your asset management strategies.

## KEY HIGHLIGHTS

- Full asset lifecycle management
- Work order management (planned & unplanned)
- Labor resource planning & scheduling
- Supply chain integration (via API)
- Inventory management
- Engineering documentation management
- Native mobile functionality (via MC Express)
- Reporting & analytics

## TECH SPECS

- SaaS & on-premise options
- RESTful API enabled
- Accruent SSO ready
- Browser based user interface
- Professionally translated in German, Spanish, and French



**CONTACT FOR A DEMO**

**Accruent, LLC**

sales@accruent.com | www.accruent.com | 512-861-0726