

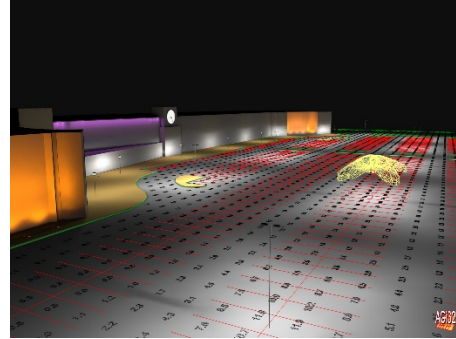
Comprehensive lighting calculations, ease of modeling, fast rendering



version 20

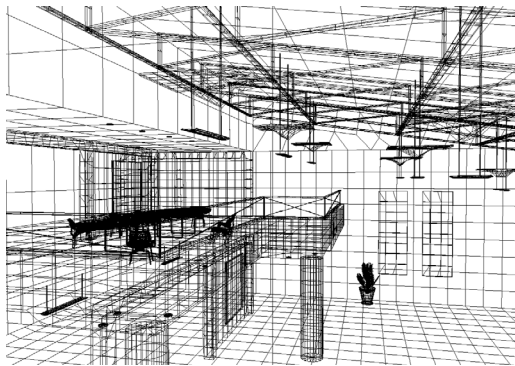
Calculations

AGI32® is a calculation tool for accurate photometric predications. AGI32® performs numerical point-by-point calculations of incident direct or reflected light on any surface or imaginary plane. It is used to predict or quantify the distribution of artificial or natural light in any environment. AGI32® can assist in luminaire placement and aiming and validate adherence to any number of lighting criterion.



Modeling

AGI32® is a simple yet powerful model builder capable of constructing almost any architectural environment. Vaults, domes, curves, slopes, and extrusions are easily created, allowing you to accurately model the architectural elements you encounter every day. For those with existing 3D models, AGI32® can import 3D geometry via DWG, DXF and through our LAI Data Exchange (LaiDex) as exported from our free SketchUp plugin.



Model created in AGI32 - wireframe



Rendered: radiosity plus raytrace

Rendering

AGI32® is a fun and interactive rendering program. Employed on this level, AGI32® can be used to generate extremely fast and photometrically accurate color images of the behavior of light within the environment. As the rendering engine is fast enough to be used on an iterative basis, designers now can quickly visualize and share different lighting scenarios before they are specified, purchased, and installed.



Radiosity rendering



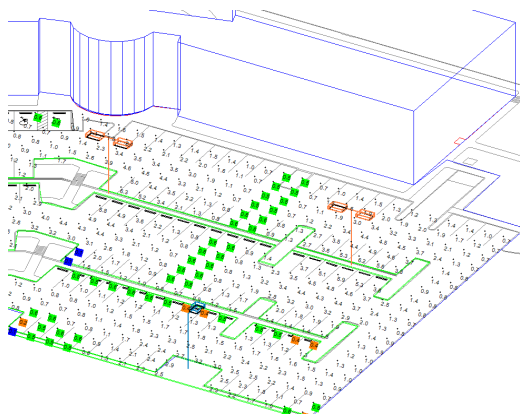
Calculations

AGi32® is the tool of choice when quantifying the amount of light present in any architectural application. Whether the problem be a 500-luminaire professional sports facility, large shopping mall parking area, commercial interior, or single emergency luminaire in a hallway, AGi32® can produce the required numerical results quickly and accurately. AGi32® is used daily to present point-by-point illuminance, roadway pavement luminance, ceiling exitance and other specific lighting quantities for all types of lighting applications. If your position on the design team requires you to submit numeric evidence of lighting quantity and quality, AGi32® can produce the data you require.

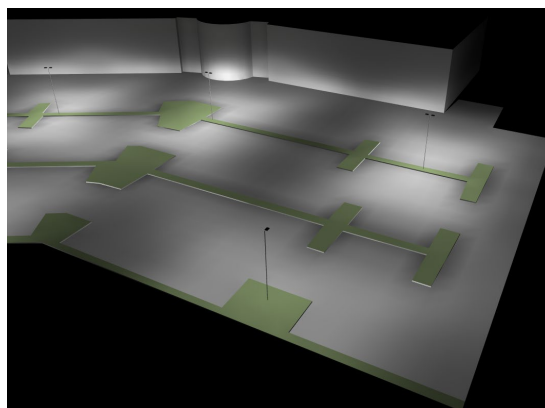
Two Calculation Methods

AGi32® has two calculation methods to assist with the computation required in the most efficient manner. For strictly numeric results in an exterior parking, floodlighting, or roadway application, AGi32® has an extremely fast direct-component calculation engine. The Direct Only calculation method will consider the shadowing effect of objects in the scene and produce point-by-point illuminance on any surface or plane in space.

For interior or exterior projects where reflected light is important, AGi32's Full Radiosity calculation method will compute the interaction between light and surface using its state-of-the-art calculation engine. In this mode all surfaces can be assigned a color and reflectance and accurate luminance levels are computed for the entire environment. An interactive light-accurate rendering is produced automatically. Switching between Direct and Full Radiosity Method is as simple as a mouse click and can be performed at any time.



Direct calculation method exterior with user-defined point highlighting



Exterior rendering generated automatically with the Full Radiosity calculation method

Photometric Data & AGi32®

AGi32® can utilize luminaire photometric data in IES (*.IES), EULUMDAT (*.LDT) and CIBSE (*.CIB). These files can be located anywhere on your network or can be dragged from many manufacturer websites directly into AGi32®.

New with AGi32® Version 20, is a better way to create, access and use your luminaire definitions. The luminaire definition area now consists of a larger multi-mode dialog which can be customized in terms of size and display for your work habits and screen hardware.

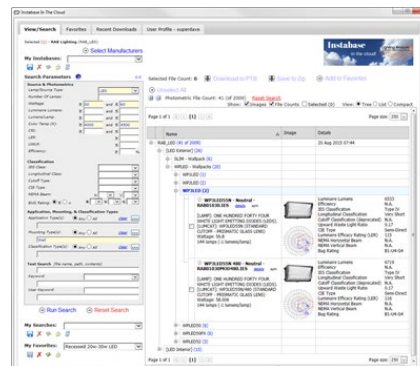
The new dialog contains a great new custom grid of all your definitions with easy editing and automatic submittal of any changes. The grid can be customized to show almost any property of the luminaire definition you like with all sorts of new power user features to streamline your experience. It's bigger, better and faster in every way!



The Photometric Instabase®

Many of the lighting industry's most prominent manufacturers provide photometric libraries to Lighting Analysts unique cloud-based database we call the Instabase®. This is a powerful forum for data access with the ability to specify unique search parameters to query across multiple manufacturers of your choice for products matching your specific needs. This is unrivaled in the lighting industry!

Manufacturers have 24/7/365 access to their data for immediate update capabilities. The [current list of participating manufacturers can be examined on our website.](#)



Specific Calculations

AGi32® can perform a variety of illumination engineering calculations for your specification requirements. Which quantities you elect to compute will depend on the lighting application and/or your specific interests.

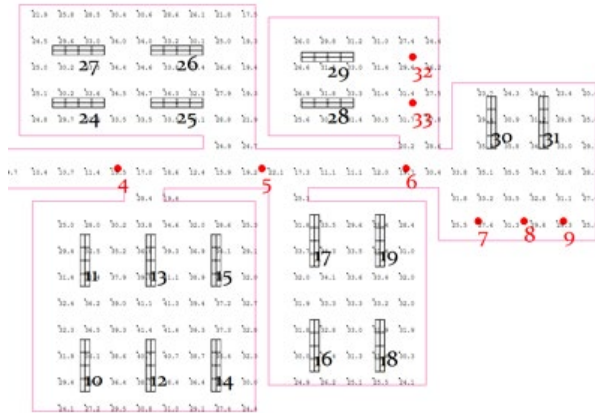
Application	Computation possibilities
Interior	Illuminance (fc or lux) Horizontal, Vertical, Variable meter aiming Luminous Exitance (lm/sq ft or lm/sq m) Lighting Power Density (watts/ sq ft) Unified Glare Rating Luminance (cd/m ²) in rendered Pseudocolor
Exterior (general)	Illuminance (fc or lux) Horizontal, Vertical, Variable meter aiming Luminous Exitance (lm/sq ft or lm/sq m) from surfaces Lighting Power Density (watts/ sq ft) Luminance (cd/m ²) in rendered Pseudocolor Glare and obtrusive light quantities: Maximum intensity at a point Threshold Increment Obtrusive light compliance reporting: Model Lighting Ordinance LEED v4 SSc6 CIE 150-2017 AS4282-2020
Sports	Illuminance (fc or lux) Horizontal, Vertical, Variable meter aiming (TV illuminance) CIE Glare Rating Uniformity Gradient, Coefficient of Variance Aiming diagrams
Roadway	Illuminance (fc or lux) Horizontal, Vertical, Variable meter aiming Lighting Power Density (watts/ sq ft) Pavement Luminance (cd/m ²) and associated quantities for IES, CIE and AS/NZ methods Veiling Luminance Threshold Increment Small Target Visibility (STV)
Daylighting	Illuminance (fc or lux) Horizontal, Vertical, Variable meter aiming IES, CIE and Perez all-weather sky models Daylight Factor (DF) LEED criteria (Version 4, Option 2) Luminance (cd/m ²) in rendered Pseudocolor (Fish Eye capture in HDR format available) Luminous Exitance (lm/sq ft or lm/sq m) from surfaces



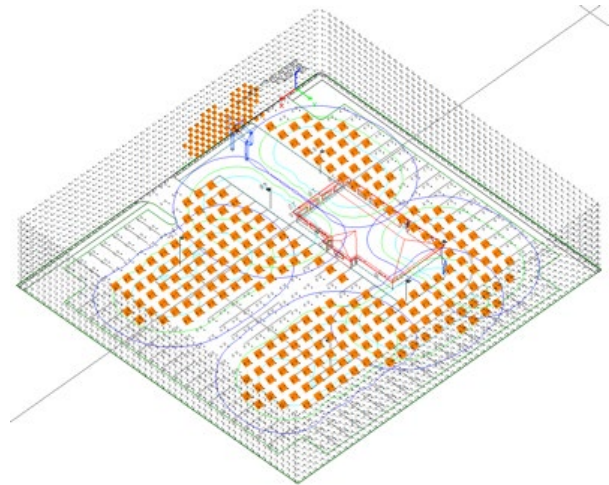
Calculation Point Options

AGi32® provides several different options for locating calculation points. The most effective option will depend on the application and the desired calculations. All options have flexibility in meter aiming (horizontal, vertical, variable, camera).

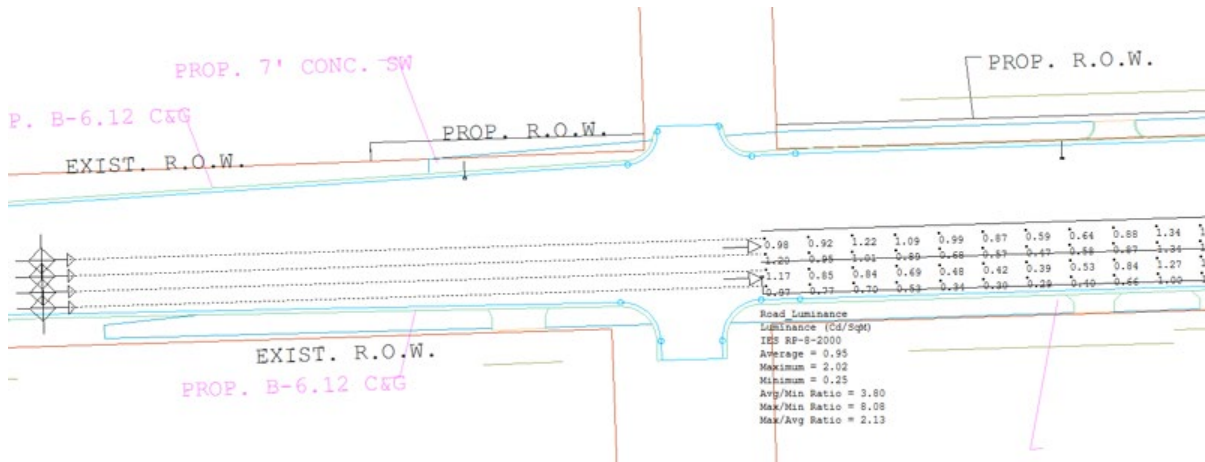
- Automatic Placement on any surface or workplane
- 2-point or 3-point grid specification, flat or sloped
- Polygon
- Line
- Scattered
- Obtrusive light (Horizontal and Vertical planes)
- Glare Rating (sports specific)
- Unified Glare Rating (interior)
- Roadway criteria



Automatic Placement calculation points on the room floor or workplane



Obtrusive Light calculation points at the property line (vertical planes)



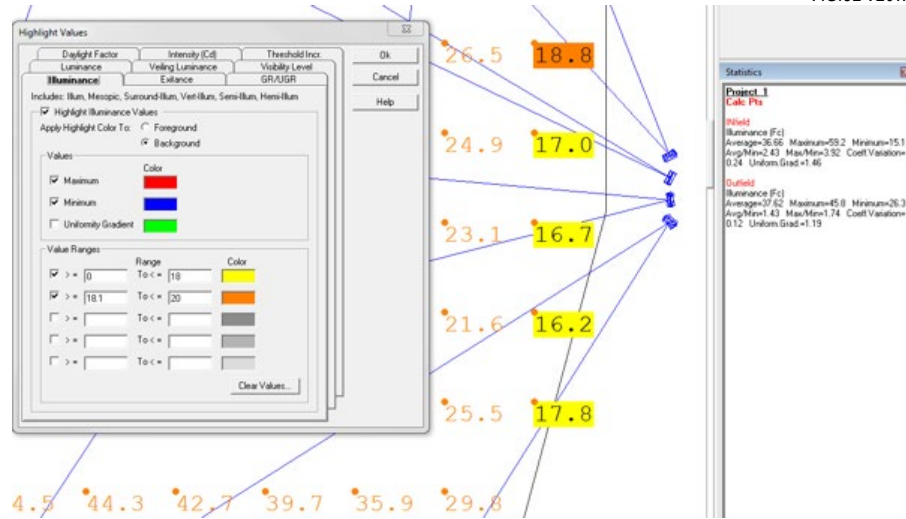
Roadway specific calculations (luminance, illuminance, veiling luminance, STV and more can be switched for visibility)



Evaluate Your Work

AGi32® offers a dynamic and intuitive working environment to evaluate your calculated results, make changes and fine tune your projects to meet specifications.

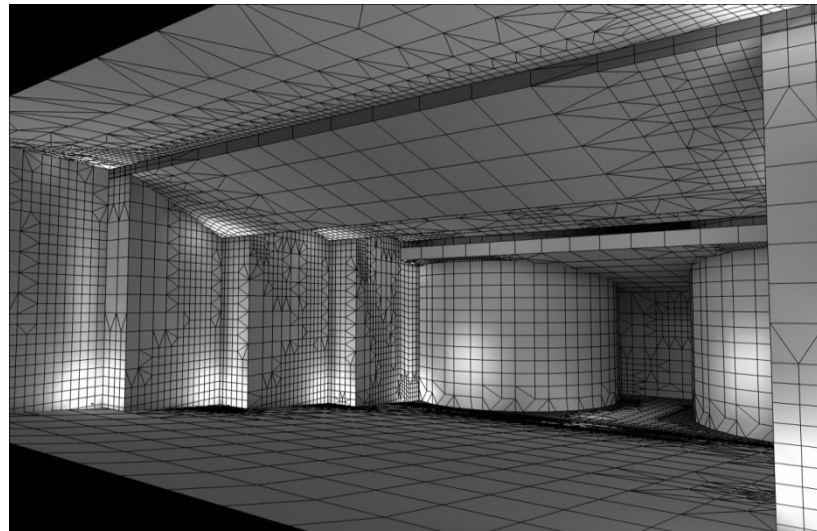
Value highlighting is one very effective method to see a project's weak points briefly. Monitor the overall statistics for all calculations, even those that are not currently visible from the Statistics window.



Modeling

AGi32® provides the tools needed to model many common architectural spaces. Using shapes like barrel vaults, cones, spheres, pyramids, and vertical extrusions, you can build complex geometries directly in AGi32.

However, if you already have a three-dimensional CAD model composed of surface information, it can be imported and utilized as if created internally. Surface properties such as color, reflectance, texture, and surface type (glass for



AGi32 created architectural geometry.



example) can be easily assigned during the import process.

AGi32® imports and exports DWG and DXF formats using the Autodesk RealDWG® toolkit.

Our free plug-in for Trimble® SketchUp® exports to an intermediate format (LaiDex) readable by AGi32.



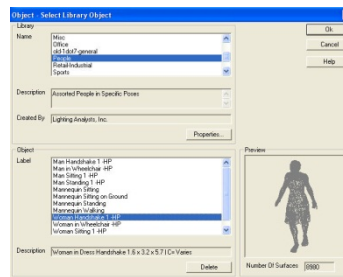
3D CAD model of Boeing 737 imported

For simple point by point calculations with no surfaces (exterior site lighting for example), AGi32® can easily import two-dimensional CAD drawings to be used as a background reference.

Object Libraries

AGi32® is delivered with several factory-provided library objects that may be used at any time to add detail, scale, and realism to any lighting project.

Objects you create or import from CAD or SketchUp® can also be added to custom libraries and organized to suit your needs.

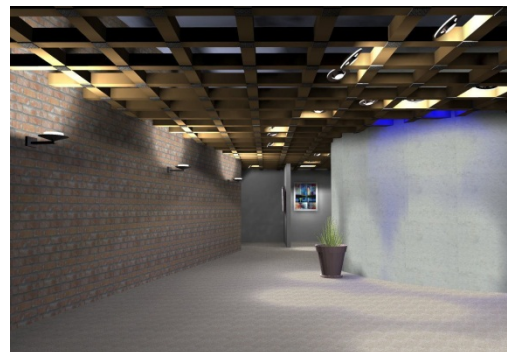


Rendering

Radiosity

The AGi32® rendering engine uses the latest developments in radiosity techniques to compute the direct and interreflected components of light in your environment. Radiosity calculations can accurately model color bleed, enhancing the realism of your visualizations.

All calculations performed in Full Radiosity calculation method produce a radiosity based rendering automatically. This rendering can be viewed interactively without recalculation. Available interactive tools include Walk, Orbit, Pan, Dolly, Zoom and Clip.



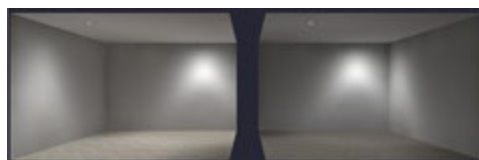
Texture Mapping

Textures are bitmap images that may be applied to any surface in AGi32®. The image can be stretched across the surface, or a repeating pattern may be applied to the surface by tiling the texture with a fixed texture size. AGi32 is provided with a textures database from which you can select several common architectural materials such as brick, tile, fabric, and wood. Making your own textures is easy by cropping your digital images and importing to the library.



Textures can make your visualizations look more realistic.

Beginning with AGi32® version 19 is the ability to modulate the reflectance value of your textures. This makes the library more flexible and enhances the role of textures to conform to your project specifications.



Carpet on left of 50%, carpet on right is 20% using same texture.

Textures can be made easily out of your Google Earth or PDF images. This can impart a new sense of realism to a rendered site and ground your presentations in reality!

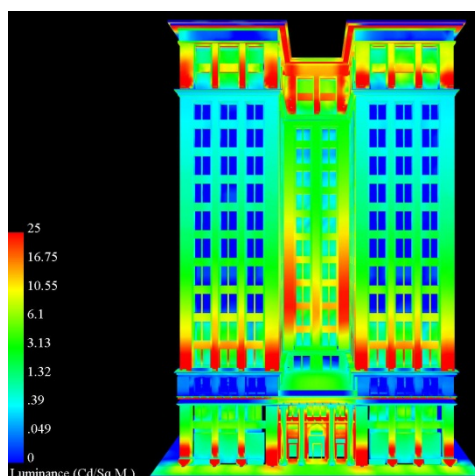


Assign a real image of the site as a texture

Pseudocolor with Scaling

Pseudocolor provides a numerically accurate color representation of the calculated environment. Each luminance or illuminance value is assigned a unique color value ranging from blue (minimum value) to red (maximum value). This allows an alternative way to view the luminance or illuminance distribution in the environment without displaying numeric values.

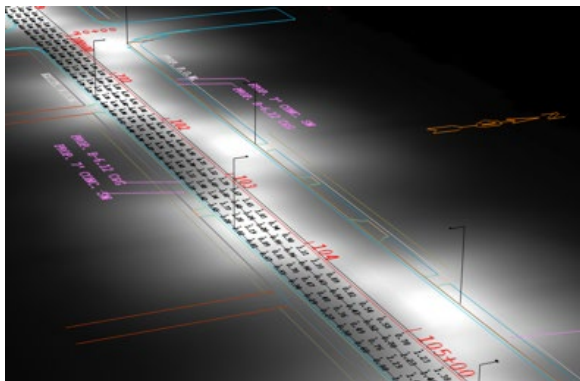
A scale can be assigned to the image to discern precise illuminance or luminance information. Renderings from different lighting scenarios can be compared by setting an equivalent maximum point.



Mike Noon, Palindrome Lighting Design

Model Overlay

Visualization is an indispensable tool in any designer's workflow, not only for presentation, but often more importantly, for constant evaluation of results as you work. AGi32® provides the ability to overlay the rendered model with imported CAD backgrounds, text, isolines and calculated values, creating a more effective frame of reference and clarity of results.

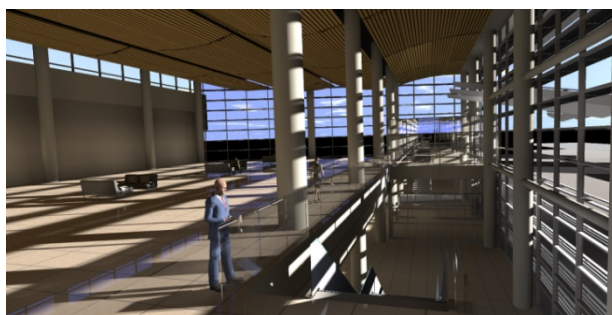


Ray Tracing

AGi32® provides a post-radiosity process ray tracing engine to enhance any single view to approach photorealism.

Specular reflections can be rendered by assigning a specular component to appropriate surfaces. This allows materials such as glass, tile, and mirror to appear realistic in a rendered view. Advanced techniques such as glossiness and soft shadows can also be applied.

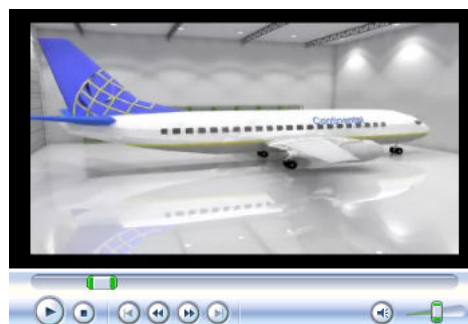
Ray-tracing can be applied to any single viewpoint or batched with multiple viewpoints and be automatically saved as a JPG or BMP image.



Paul Boken Mulvey & Banani International

Animation

Any AGi32® rendering can be animated by recording a series of viewpoints while using AGi32's interactive viewing commands. The animation path is then computed with adjustable walk speed and pause capability. Animations can be created with multiple scenes, frame sizes and opening and closing frames. An interactive preview function makes it easy to create successful animations. It is also possible to ray trace all frames to make a truly professional production. The result is an AVI animation that can be viewed on any computer, independent of AGi32®.



Peer Eric Moldvar, Eclairage Techno

And More...

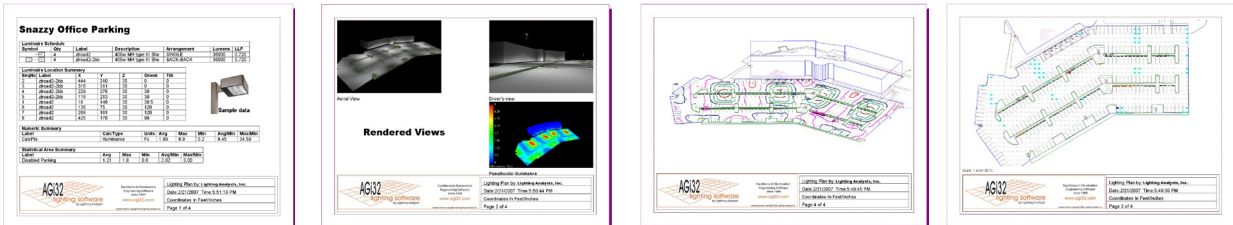
Presentation Output with Reports

AGi32® can produce output in many ways. For example: anything you see in AGi32's Model construction mode can be printed in WYSIWYG fashion, and all calculations can be exported to DWG or DXF for integration with your CAD



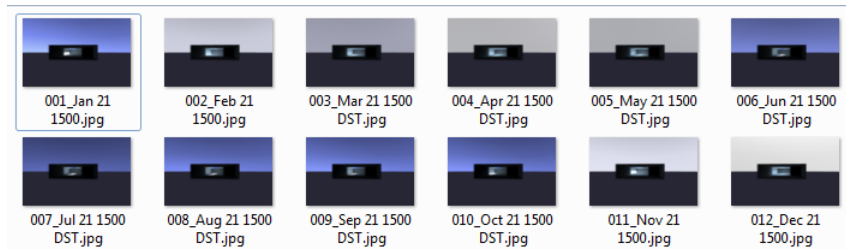
software. Renderings can be exported to single bitmap images (JPG, BMP) and can be sized independently of your display. Renderings can also be animated and saved as AVI movie files for playback independently on any computer. However, all these methods aside, it is the AGi32 Reports function that provides the ability to produce printed or electronic output containing your choice of calculation and visualization views for a truly complete presentation.

With Reports you can utilize a completely automated approach to output or select any media size and number of pages to hold your project presentation. Take a few minutes to create a series of master templates containing your logos and title blocks (bitmaps too) to be used anytime. Then call up a template and place your various point-by-point views, schedules, and visualizations on the various pages. You can also incorporate external files (TXT) for disclaimers, if required. When complete, either print/plot or export to PDF* or MDI. *PDF writer required.



Daylight Study

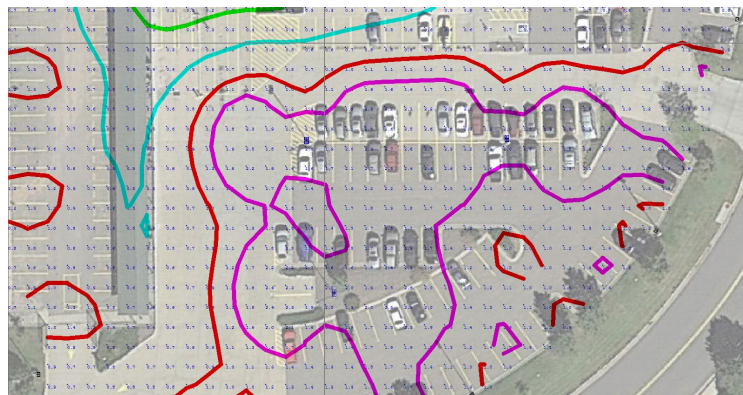
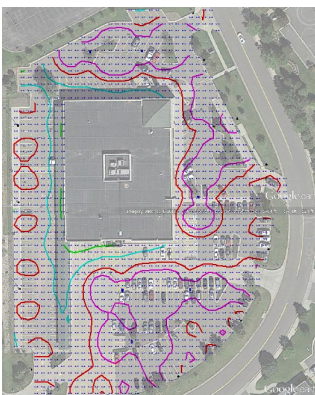
AGi32® can run complete daylight studies over multiple days and multiple hours per day in a single execution. Once a daylight study has been completed, the rendered images are written to the project folder to be viewed in sequence using Windows Preview or the tools of your choice.



Daylight Study Images

Background Images

AGi32® can import a series of JPG or PDF images to be used as a background for your lighting work. The images can be scaled, seamed together, and faded to show underneath your lighting layout and calculations. This is immensely powerful for retrofit work as images can be captured in seconds from Google Earth, all you need is an address! Images can also be automatically added to the textures library to be used in renderings.



Try AGi32®!

Download a fully functional, free 14-day Trial version from www.lightinganalysts.com.

Get started by watching the [What is AGi32](#) video, and utilize our [AGi32 Education Site](#).

Questions are always welcome!
info@agi32.com | 303.972.8852

